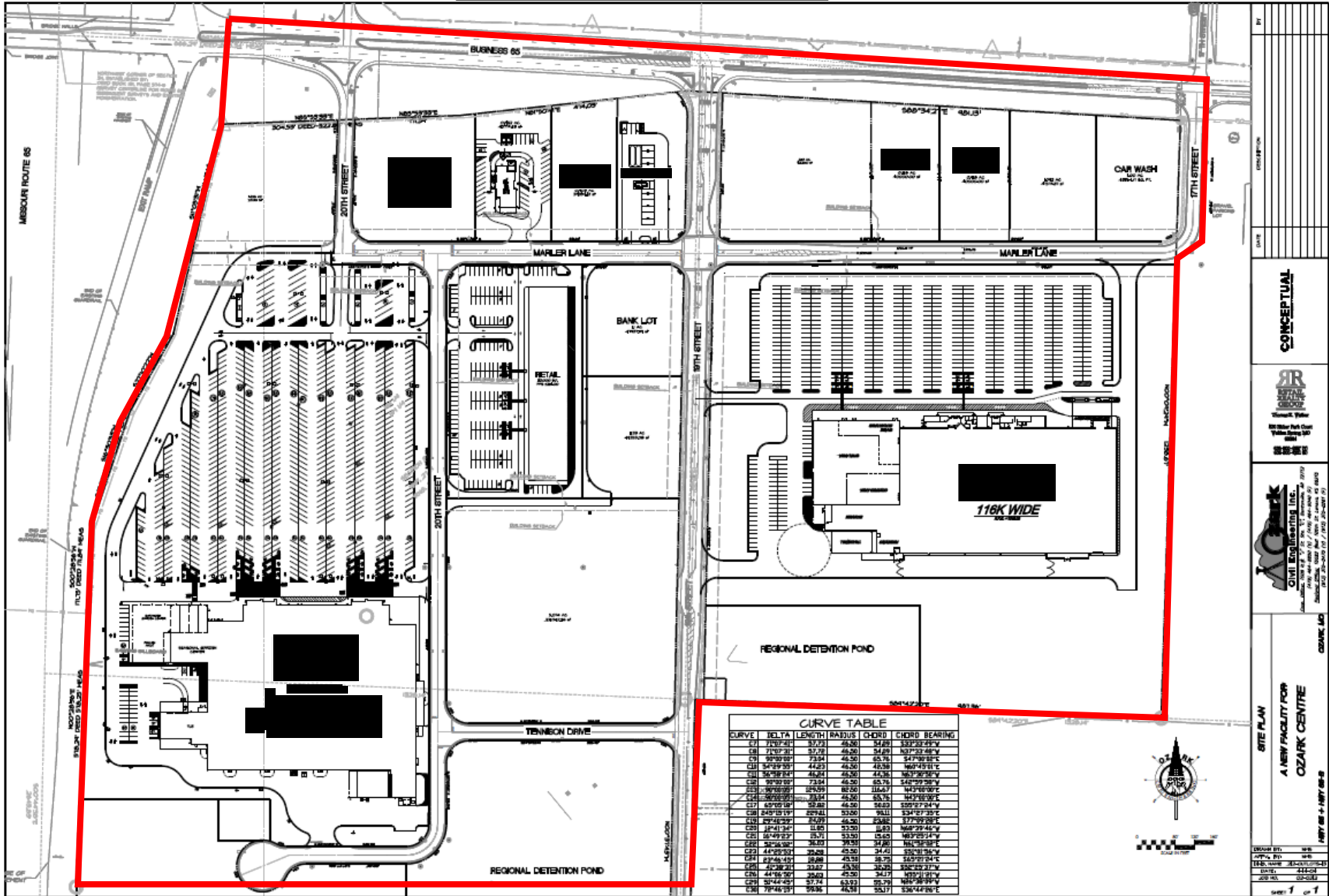


Map of the Ozark Centre
 Transportation Development District



CURVE TABLE

CURVE	DELTA	LENGTH	RADIUS	CORD	CHORD BEARING
CB 1 2107-21	31.73	26.30	31.00	331°32'25"V	
CB 2 2107-21	31.73	46.30	34.00	167°32'48"V	
CB 3 3107-21	73.34	45.50	45.75	34°38'51"E	
CB 4 3107-21	44.23	46.30	48.38	160°45'11"E	
CB 5 36°38'51"E	46.62	46.30	44.36	167°30'32"V	
CB 6 36°38'51"E	73.34	46.30	48.75	34°38'51"V	
CB 7 36°38'51"E	25.09	82.50	116.67	143°38'51"V	
CB 8 36°38'51"E	31.73	52.30	58.75	147°38'51"V	
CB 9 45°00'00"V	52.00	46.30	50.00	330°57'34"V	
CB 10 24°10'19"V	82.41	52.00	94.11	334°27'33"V	
CB 11 37°42'32"V	84.00	46.30	83.88	317°30'32"V	
CB 12 37°42'32"V	11.80	53.30	54.83	168°29'45"V	
CB 13 36°49'27"V	25.17	53.30	55.60	163°29'24"V	
CB 14 36°49'27"V	26.03	75.50	31.60	161°31'24"V	
CB 15 44°20'32"V	35.28	45.50	34.42	335°31'24"V	
CB 16 44°20'32"V	68.88	43.30	35.75	340°31'24"V	
CB 17 44°20'32"V	32.67	45.30	32.00	336°49'27"V	
CB 18 44°20'32"V	35.00	45.30	34.17	167°31'24"V	
CB 19 37°42'32"V	57.74	53.00	65.75	165°30'34"V	
CB 20 37°42'32"V	36.36	48.00	55.17	136°44'28"V	

CONCEPTUAL

RR
 RAILROAD
 RAILROAD
 RAILROAD

AC
 CIVIL ENGINEERING, INC.
 1000 N. W. 10th St., Suite 100
 Ft. Lauderdale, FL 33304-3000
 (954) 575-1100
 FAX: (954) 575-1101
 www.ac-engineering.com

SITE PLAN FOR A NEW FACILITY FOR OZARK CENTRE

DATE: _____
 BY: _____

SCALE: 1" = 40'-0"